

High Speed Weigh In Motion

All applications are supported by a common logger and software infrastructure.

This offers the unique advantage of implementing only one maintenance and logistic platform for all your HSWIM, screening, monitoring as well as classification, and counting applications.

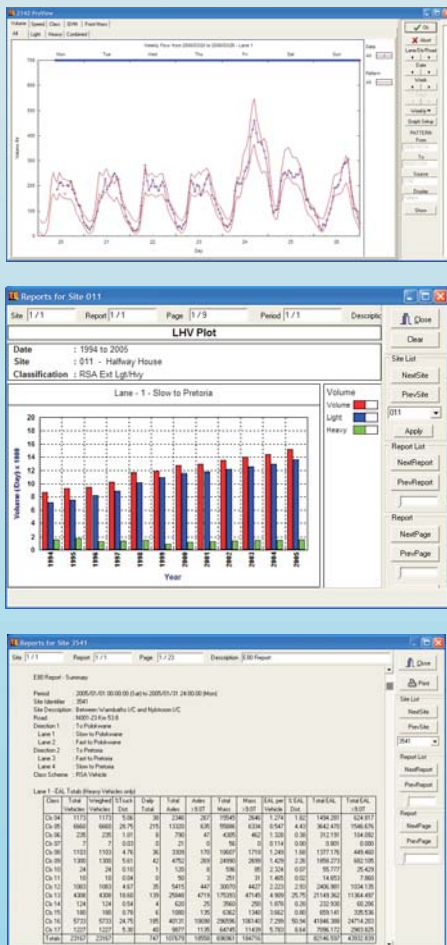
Sensors supported:

- Bending Plates
 - Weigh station screening lanes
 - In highway screening
 - Long term statistics
 - ASTM I* (Dual sensors per lane)
- Piezo Elements
 - Long term and short term statistics
 - Lower accuracy in highway screening
 - ASTM II* (Dual row of sensors full lane width)
- Quartz Crystal Elements
 - Weigh station screening lanes
 - In highway screening
 - Long term statistics
 - ASTM I* (Single row of two sensors full lane width)

* Local installation conditions influence accuracies.

These configurations can be enhanced with autonomous axle detection and off-scale sensors, providing additional information for light and partially weighed axles.

Comprehensive reporting



HSWIM screening



High Speed Weigh In Motion

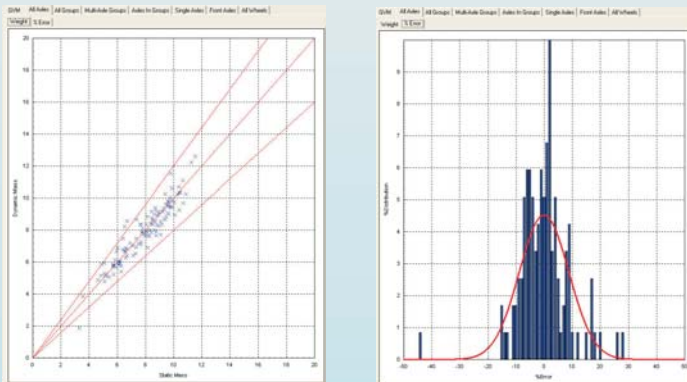
From Mikros Systems

● By using the Mikros Systems RAKTEL as basic platform the following list of attributes and features are standard:

- Modular Design
- High performance cross-talk free loop detection
- Digital chassis height detection
- Comprehensive system & sensor performance monitor
- Anti-coincidence detection
- Tidal flow & reverse direction recording
- Video frame grab control
- Overheight detection
- Range of most popular classification & data formats
- User modifiable parameter sets
- Complete software support
- Complete range of communication interfacing
- Low power consumption
- Solar power charging
- Hot swappable batteries
- Offscale sensors

● Protocols available to integrate into weigh station control software

Calibration



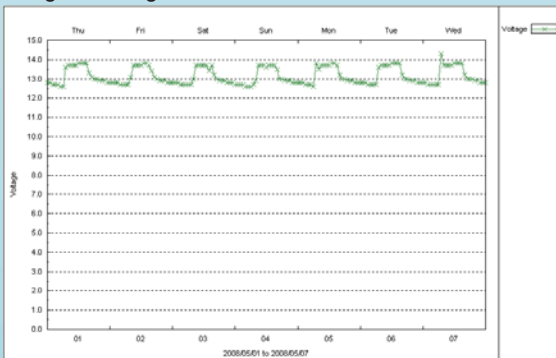
Automatic calibration results and verification of applicable standard (ASTM & COST323)

Axis	Min	Max	Min	Max	Min	Max	Min	Max
Wt	26.777	28.180	4.24	26.777	36.33	11.63	20	
1	5.66	10.02	4.026	5.640	17.36	5.5		
2	5.643	6.188	7.49	5.643	6.440	12.37	5.76	
3	7.23	7.460	2.17	7.236	7.880	6.76	7.4	
4	4.670	5.260	11.21	4.670	5.530	12.2	5.3	
5	4.338	4.740	7.22	4.338	5.040	12.74	4.4	
SP					4000			
PF					100.0			
CF					30.30			
CF					24			

Output from the calibration module providing video confirmation of calibration vehicles used at both the HSWIM and reference scales

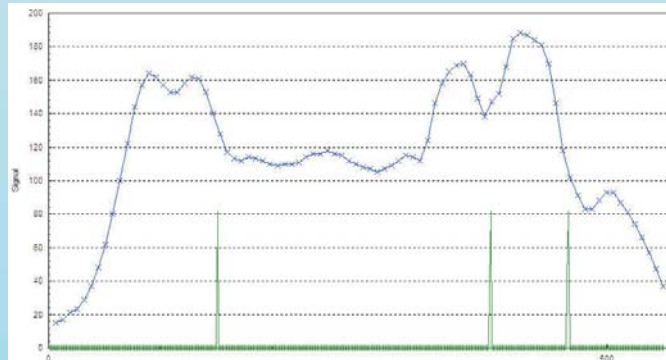
Diagnostics

Long term diagnostics



Long term battery voltage information

Sensor diagnostics



Vehicle profile & axle information

Mikros Systems 

Your Partner in Traffic Engineering

Mikros Systems (Pty) Ltd
PO Box 75034
Lynnwood Ridge, 0040
South Africa

Tel : +27 (0)86 111-5393
Fax : +27 (0)12 804-4706
Mail : mikros@mikros.co.za
Web : www.mikros.co.za


syntell
A Syntell group company